



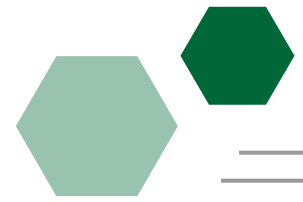
PRIVATE ACADEMIC LIBRARY NETWORK OF INDIANA

2022 IMPACT REPORT

CELEBRATING
30 Years of PALNI

www.palni.org

Table of Contents



01	Executive Director's Message
02	2022 Highlights
04	PALNI by the Numbers
05	PALSave: PALNI Affordable Learning
06	PALNI's Support for Open
07	Cost Savings and Partnerships
08	About PALNI
BC	PALNI Board of Directors

Acronyms Guide

ALI	Academic Libraries of Indiana
ARPA	American Rescue Plan Act
ICOLC	International Coalition of Library Consortia
ILL	Interlibrary Loan
IMLS	Institute of Museum and Library Services
ISL	Indiana State Library
JSTOR	Journal Storage
MCLS	Midwest Collaborative for Library Services
OER	Open Educational Resources
PALCI	Partnership for Academic Library Collaboration & Innovation
PALNI	Private Academic Library Network of Indiana



From the Executive Director



Kirsten Leonard
Executive Director
kleonard@palni.edu
(317) 752-6831

As higher education transforms to adopt new technology, contain costs, and deepen knowledge, so do libraries. Our focus at the Private Academic Library Network of Indiana (PALNI) is on building capacity and expertise across our 24 supported schools.

The *people*—not the buildings—provide the passion, knowledge, and instruction to foster student learning and persistence, while our relationships with faculty and administrators help us carry out this important work. By leveraging skills and empowering library staff in ways that allow them to engage more with their campuses, PALNI institutions can more effectively serve their academic missions.

All of us in PALNI seek to work together to solve problems and build services. Despite our extraordinary ability to collaborate and achieve more at scale, staffing levels have been diminishing in ways that limit our ability to assess and transform. With increased capacity, PALNI schools could better retain students, support academic success, and lower the cost of resources and systems.

Investing in our staff greatly impacts our collective success, not only within PALNI but externally as well. PALNI is partnering with other consortia, like the Partnership for Academic Library Collaboration and Innovation (PALCI), to provide low-cost repository services to our institutions. Staff across PALNI schools provide key direction and analysis to improve these services.

This impact report shares highlights of a momentous 30th year for PALNI. As we look toward the future, I want to sincerely thank our consortial and library staff, deans and directors for their exceptional work, guidance and commitment to student success.

Kirsten



2022 Highlights

PALNI celebrates 30 years

PALNI proudly celebrated its 30th anniversary in 2022. During its first three decades, the consortium has navigated the evolving challenges of higher education to achieve many successes. What began as a joint initiative among libraries to make automation more affordable has transformed into a leading example of what it takes for academic libraries to work together and succeed at scale.

Welcome Saint Mary-of-the-Woods College

PALNI welcomed Saint Mary-of-the-Woods College to its list of supported institutions. The Woods' Mary and Andrew Rooney Library joins PALNI's highly engaged, collaborative group of private college and seminary libraries across the state, bringing the number of institutions within the consortium to 24.

Outstanding staff honored

PALNI recognized 17 library and consortial staff members for outstanding service, deep collaboration, leadership and more during its biennial All-Staff Meeting. The award recipients were nominated by their peers and represent

a variety of organizations, roles, and responsibilities within the consortium. Awards were given in six categories that support PALNI's mission.

Open Bibliographic Data Management Planning Grant project launched

PALNI launched a planning project in open bibliographic data management made possible by a \$225,000 American Rescue Plan Act (ARPA) grant from the U.S. Institute of Museum and Library Services (IMLS), administered by the Indiana State Library. The project aims to significantly enhance financial sustainability and access to information, allowing libraries to further deliver on their critical role in student success.

Library directors attend Harvard Leadership Institute

Amy Bryant, Library Director for Earlham College, and Jessica Trinoskey, Director of Library Services for Marian University, were selected to attend the competitive Harvard Leadership Institute for Academic Librarians. Each received a leadership development grant from PALNI to participate in the intensive, five-day program.





2022 Highlights

Board endorses ICOLC statement on metadata rights

PALNI's Board of Directors unanimously endorsed ICOLC's Statement on the Metadata Rights of Libraries. The statement urges all organizations to support libraries' rights and interests to use, re-use, adapt, aggregate, and share metadata without restriction or limitation. Metadata is structured information that allows individuals to identify, locate, and retrieve resources, making it a critical tool for supporting research and scholarship.

Lilly Endowment Inc. awards additional funding for PALSave

Lilly Endowment Inc. awarded PALNI \$275,000 to support PALSave, the consortium's affordable learning initiative. The new funding comes on the heels of a 2019 Lilly Endowment grant of \$520,000 in support of the program. The \$795,000 in total funding is helping to create significant savings for Indiana college students.

Faculty recognized with Open Educator Award

Ten faculty members from PALNI institutions were named recipients of the PALSave Open Educator Award.

The honorees were lauded for being key players in the creation and adoption of Open Educational Resources, or OER—a move that reduces costs for students, improves access to required texts, and increases student success and retention.

Three PALNI libraries awarded Innovation Grants

PALNI awarded Library Innovation Grants to DePauw University, Taylor University and the University of Saint Francis to support their creative ideas for enhancing student learning and success. The grants are funding initiatives in controlled digital lending, interactive online tutorials and quiet study spaces.

Introducing the redesigned palni.org

The PALNI website—palni.org—received an all new look in the summer. The site was migrated to a new content management system and redesigned with enhanced functionality, security, accessibility and mobile responsiveness in mind. The revamped site allows stakeholders to learn more about the consortium and navigate to its services with ease. ▲

PALNI by the Numbers



47,500+
students and
faculty served



24
institutions
supported



30
years of sharing
staff and systems



15
advisory groups with
focused expertise

PALShare

Patrons at any PALNI library can borrow books or media from other PALNI libraries at no cost.

3,105 items

checked out
via PALShare
in 2021



BORROW
From nearly
4 million items

RECEIVE
In 3-5 days

RETURN
In 60 days (books)
or 14 days (media)

"PALShare is a great example of what PALNI stands for—collaboration between libraries. It is an extremely efficient method, as it frees up staff time while getting materials to patrons faster."
—Laura Vogler, Wabash College

"The ways through which PALShare expands and enhances our library's access to resources cannot be overstated."
—Lisa Karle,
Saint Mary's College

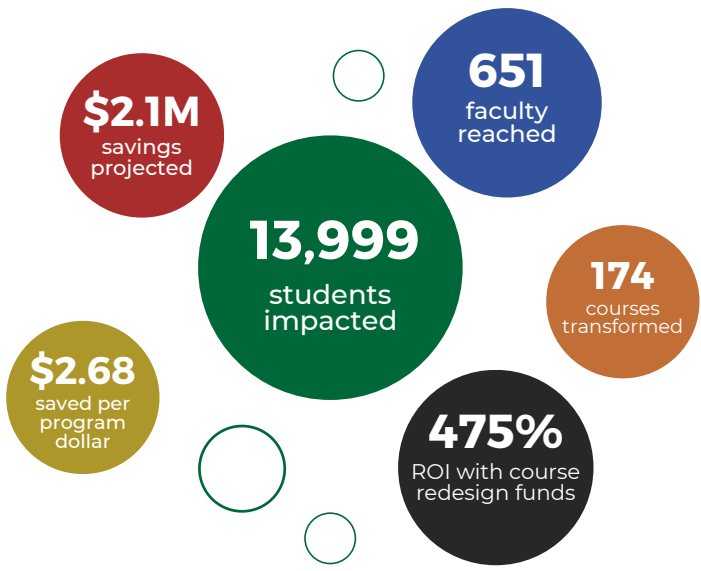

"PALShare is much simpler than traditional ILL, and patrons now recognize the PALShare sticker. When they see it on their books, they light up because they know it means more time with the material."
—Roger Peters, Concordia



PALSave: PALNI Affordable Learning

PALSave combats the rising costs of textbooks by advancing the use of open educational resources (OER). The project supports student success and retention by providing collaborative tools and a framework for OER awareness, education, and engagement.

100% of PALNI schools participating



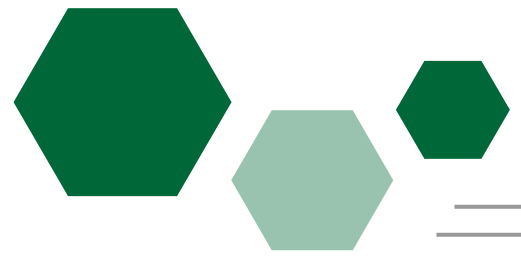
98% of students report a positive or neutral impact on studies and grades with OER

40% of redesigned courses show grade improvement



PALSave pays off

“ Participating in PALSave's course redesign process was a fantastic experience. I learned so much and found many wonderful resources I hope to use in the future to benefit students. I highly recommend this program to faculty and would love to participate again to help move some of my other courses into the zero-cost space. — Glené Mynhardt, Hanover College ”



PALNI's Support for Open

9 titles

In production through PALSaves Textbook Creation Grants. Authors receive up to \$6,500 per project.

PALNI Press

Platforms for openly publishing creative and scholarly content.



\$225k

Awarded through ARPA grant to explore open bibliographic data management.

Institutional Repository

Hyku for Consortia is a collaboration from PALNI and PALCI to develop an affordable, open source institutional repository solution.

Advancing Innovation

\$20,871 total



Awarded to three PALNI schools through the Library Innovation Grant. Congrats to DePauw, Taylor, and University of Saint Francis!

50+ tenants

from four partnering consortia in the Hyku Commons repository.



\$248,050

awarded from IMLS to support Hyku for Consortia: Removing Barriers to Adoption.



DePauw University

Controlled Digital Lending Infrastructure

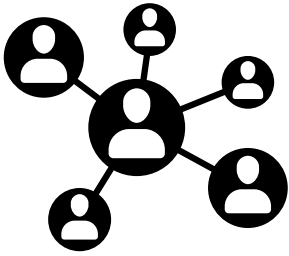
Taylor University

Improving Student Success by Providing Quiet Study Space

University of Saint Francis

Creating Innovative, Interactive, and Engaging Online Tutorials for Student Success





Cost Savings and Partnerships

External Collaboration

PALNI seeks partnerships that increase the visibility of our institutions and help our libraries achieve initiatives more effectively in terms of quality and cost savings.

PALNI libraries are interested in finding solutions that decrease costs while delivering excellent services to students. PALNI has consistently held flat the costs shared among institutions so that their libraries may reinvest funds locally.

Some of PALNI's Partners

- OhioNet, PALCI, and MCLS
- Open Education Network
- Partnership for Shared Book Collections
- Library Publishing Coalition
- ALI and ISL

Shared E-Resources

PALNI collaborates with ALI (Academic Libraries of Indiana) to negotiate ebook discounts with Oxford and JSTOR.



JSTOR title uses: 54,607

Oxford title uses: 8,181
(from 875 titles across PALNI)

Group discount savings: up to 98%



About PALNI

Who We Are

The Private Academic Library Network of Indiana (PALNI) is a 501(c)(3) owned by 24 supported private academic institutions. This library-to-library collaboration strives to enhance faculty teaching and student learning for academic success. Through the “Power of PALNI,” each school benefits from reducing the duplication of efforts and achieving more in quality, value, and support.

Our Commitment

The academic landscape is growing more difficult with escalating financial and demographic challenges, yet colleges and universities must continue to provide excellent service for students. To help address these challenges, PALNI has held flat the costs shared among its supported institutions, while expanding collaboration within the consortium and with external library partners.

Collaboration at Scale

Our model of deep collaboration pools resources and leverages expertise to expand services while containing costs. PALNI shares systems and knowledge in many areas including resource management, strategic planning, affordable education, instructional technology, collections, reference, information fluency, communication, outreach, and data management to meet these goals.

Visit palni.org to learn more.



PALNI Board of Directors

Karl Stutzman

Anabaptist Mennonite
Biblical Seminary

James Bell

Anderson University

Mark Root

Bethel University

Josh Petrusa

Butler University

Scott Seay

Christian Theological
Seminary

Robert Roethemeyer

Concordia Theological
Seminary

Brooke Cox

DePauw University

Amy Bryant

Earlham College

Jessica Mahoney

Franklin College

Fritz Hartman

Goshen College

Tonya Fawcett

Grace College
and Seminary

Kelly Joyce

Hanover College

Noelle Keller

Huntington University

Darla Haines

Manchester University

Jessica Trinoskey

Marian University

Denise Pinnick

Oakland City
University

Rusty Tryon

Saint Mary-of-the-Woods
College

Joseph Thomas

Saint Mary's College

Dan Kolb

Saint Meinrad School of
Theology

Shannon Eaves

Taylor University

Kristina Brewer

Trine University

Marisa Albrecht

University of Indianapolis

Maureen McMahan

University of Saint Francis

Jeff Beck

Wabash College



c/o Irwin Library | 4553 Clarendon Road
Indianapolis, IN 46208
staff@palni.edu | www.palni.org